



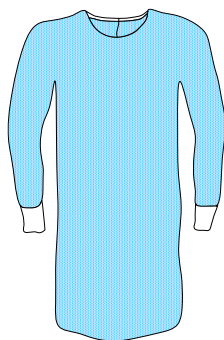
MEDICA
EUROPE

Euroguard Catalogue

Gowns

1 Surgical gowns

1.1 SMS Surgical gowns STANDARD



Length:

L is 120cm, XL is 132cm, and XXL is 142cm.
The X-long version is about 12cm longer than the regular size. The L-XXL is 150cm.

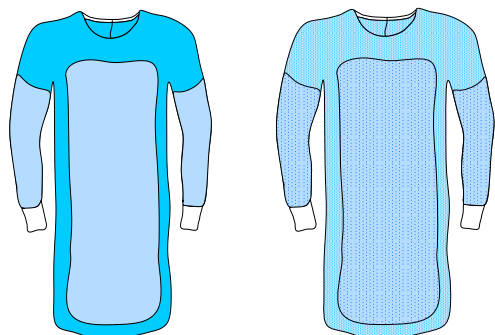
The gowns have elastic cuffs and a velcro closing in the neck.

The sterile gowns are packed in a wrap in a peelable pouch.

The gowns are latex free and comply to EN13795 norm.

Size	Type	Reference number	Order number sterile	Order number unsterile
L -Xlong	SMS Basic Pro	1304213	2544700 / 94021EG	06695B
XL -XLong	SMS Basic Pro	1304214	2544710 / 94022EG	06696
Basic Pro gown: for relatively dry procedures				
L	SMS Standard	1306748	2544800 (was 2540540)	
XL	SMS Standard	1306749	2544810 (was 2541940)	
XXL	SMS Standard	1306750	2545060 (was 2540530)	
L -Xlong	SMS Standard	1302219	2545060 (was 2542530)	
XL- Xlong	SMS Standard	1302220	2544840 (was 2542540) / 11016EGA	06724A
XXL-Xlong	SMS Standard	1302221	2542550	
L-XXL	SMS Standard	1303805	2544520	
Standard gown: for relatively dry procedures				
L-XL	SMS Standaard Pro	1304063	2544660	
XL-XL	SMS Standaard Pro	1304062	2544960 (was 2544670) / 11005EG	
Standard Pro gown: for relatively dry procedures				

1.2 SMS Surgical gowns REINFORCED



Length:

L is 120cm, XL is 132cm, and XXL is 142cm.

The X-long version is about 12cm longer than the regular size. The L-XXL is 150cm.

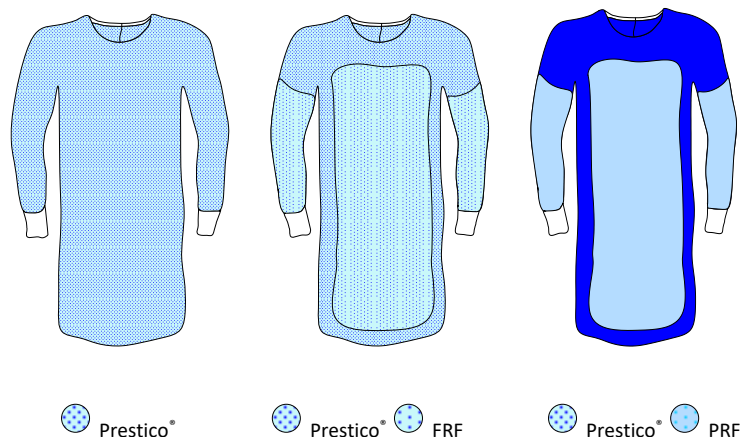
The gowns have elastic cuffs and a velcro closing in the neck.

The sterile gowns are packed in a wrap in a peelable pouch.

The gowns are latex free and comply to EN13795 norm.

Size	Type	Reference number	Order number sterile	Order number unsterile
XL-XL	SMS Basic Pro Polyethylene reinforced (PRF)	1304959	2544730	06697
Polyethylene reinforced (PRF): impermeable at sleeves and chest/abdomen area, suitable for wet to very wet procedures.				
L	SMS Basic Pro Polyethylene reinforced (PRF)	1303341	2544590	
XL	SMS Basic Pro Polyethylene reinforced (PRF)	1303342	2544600	
XXL	SMS Basic Pro Polyethylene reinforced (PRF)	1303343	tbd	
L-Xlong	SMS Basic Pro Polyethylene reinforced (PRF)	1303344	2544950 (was 2544620) / 11506EG	
XL-Xlong	SMS Basic Pro Polyethylene reinforced (PRF)	1303345	2544630 / 11513EG	06680
XXL-Xlong	SMS Basic Pro Polyethylene reinforced (PRF)	1303346	2544640	
L-XXL	SMS Basic Pro Polyethylene reinforced (PRF)	1303804	2544510	
Polyethylene reinforced (PRF): impermeable at sleeves and chest/abdomen area, Suitable for wet to very wet procedures.				

1.3 Prestico® Surgical gowns STANDARD and REINFORCED



Length:
 L is 120cm, XL is 132cm and XXL is 142cm. The X-long version is about 12cm longer than the regular size. The L-XXL is 150cm.

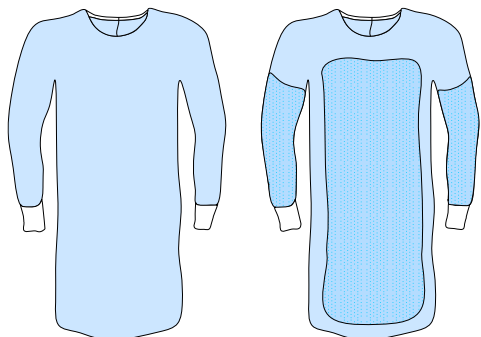
The gowns have elastic cuffs and a velcro closing in the neck.

The sterile gowns are packed in a wrap in a peelable pouch.

The gowns are latex free and comply to EN13795 norm.

Size	Type	Reference number	Order number sterile
L	Prestico® Standard	1307335	2544850 (was 2542560)
XL	Prestico® Standard	1307336	2544860 (was 2542570) / 11101EGC
XXL	Prestico® Standard	1307337	2544870 (was 2542580)
L-Xlong	Prestico® Standard	1307338	2544880 (was 2542590) / 11103EGC
XL-Xlong	Prestico® Standard	1307339	2545050 (was 2542600) / 11104EGC
XXL-Xlong	Prestico® Standard	1307340	2544890 (was 2542610)
L-XXL	Prestico® Standard	1307935	2545100
Standard gown: for relatively dry procedures.			
L	Prestico® Material reinforced (FRF)	1307341	ntb
XL	Prestico® Material reinforced (FRF)	1307342	2545030 (was 2542660)
XXL	Prestico® Material reinforced (FRF)	1307343	ntb
L-Xlpng	Prestico® Material reinforced (FRF)	1307344	2545080 (was 2542680)
XL-Xlpng	Prestico® Material reinforced (FRF)	1307345	2545070 (was 2542690) / 11110EGC
XXL-Xlong	Prestico® Material reinforced (FRF)	1307346	2545020
L-XXL	Prestico® Material reinforced (FRF)	1307886	2545090
Material reinforced: for relatively wetter procedures.			
XL-Xlong	Prestico® Polyethyleen versterkt (PFR)	1307351	2544900 (was 2544230)
Polyethylene reinforced (PRF): impermeable at sleeves and chest/abdomen area, suitable for wet to very wet procedures.			

1.4 Spunlace surgical gowns STANDARD and REINFORCED



● Spunlace ● Spunlace ● FRF

Length:

L is 120cm, XL is 132cm en XXL is 142cm.

The X-long version is about 12cm longer than the regular size. The L-XXL is 150cm.

The gowns have elastic cuffs and a velcro closing in the neck.

The sterile gowns are packed in a wrap in a peelable pouch.

The gowns are latex free and comply to EN13795 norm.

Size	Type	Reference number	Order number sterile	Order number unsterile
XL-Xlong	Standard	1301874	2544820 (was 2542090)	
Standard gown: for relatively dry procedures.				
XL-Xlong	Material reinforced (FRF)	1301829	2544980 (was 2542120)	
Material reinforced: for relatively wetter procedures.				